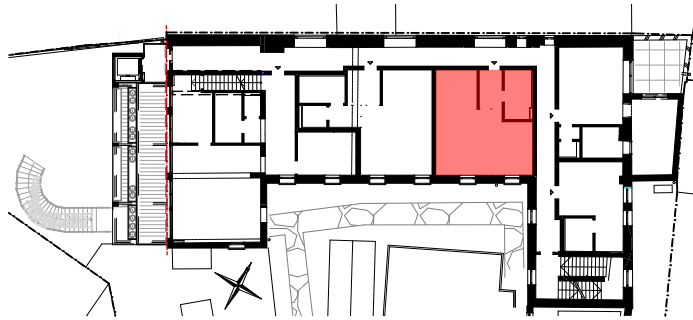


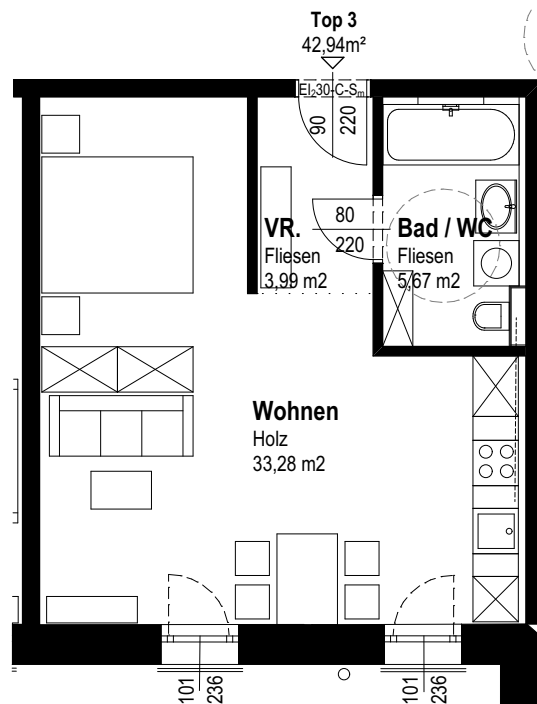
Wohnungstypenplan

TOP 03



VR 3,99m²
Wohnen 33,28m²
Bad/WC 5,67m²

Wohnfläche 42,94m²



ARIDOR-Privatstiftung
Kürnbergerweg 9, 4020 Linz

Arch. DI Jürgen Hager
Herrenstrasse 29, 4020 Linz

1:100